

Have you ever
met a Sea Dragon ?



Anglian
Water has!



Rutland Water



Did you know?

It's one of the **largest** man-made lakes in Europe, in the smallest county in the UK!

Was built in 1970's to supply drinking water to hundreds of thousands of customers

Provides a range of environmental, social and economic benefits


Is a specially protected area for the rare birds that live there

What did we find?



love every drop
anglianwater



A man with a beard and short dark hair is wearing a green safety vest over a black long-sleeved shirt. He is holding a blue toy fish with a yellow beak-like mouth. He is making hand gestures: his right hand is pointing up with the index finger, and his left hand is holding the fish. The background is a blurred outdoor setting with a body of water and trees under an overcast sky.

They're definitely not swimming dinosaurs.

What is an Ichthyosaur



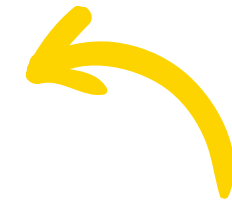
...it's **not** a dinosaur
it's an ancient marine
reptile which lived in
the Jurassic period

It is approximately 10.5
metres long



Ichthyosaur means
'FISH LIZARD' in Greek

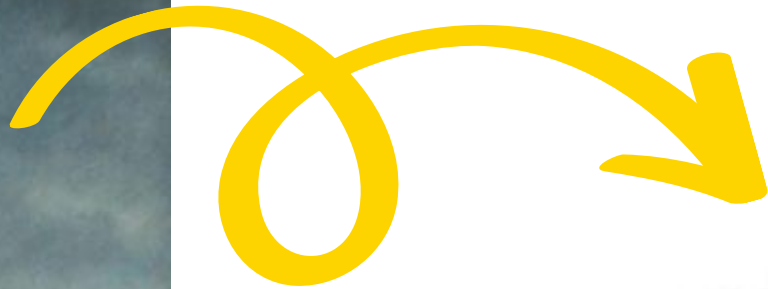
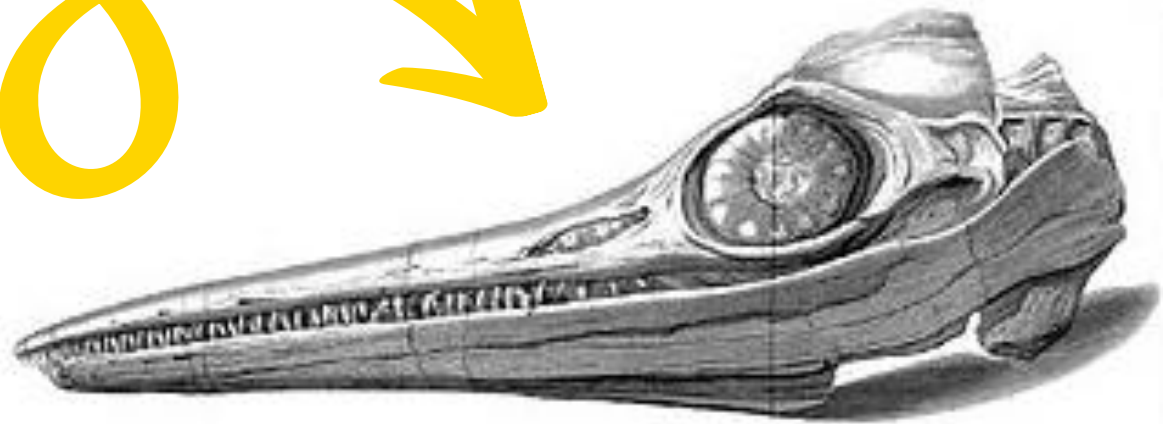




**Preserving
for the
future**



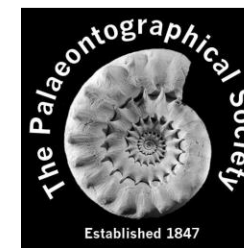
Mary Anning – An unsung hero



Collaboration



We've been working closely with local partners on the excavation, conservation and preservation of this remarkable find.



The University of Manchester





Keep an eye
out for more
ichthyosaur
updates



anglianwater.co.uk/RutlandSeaDragon