

Improving the water mains in Witham St Hughs

The Anglian Water region is one of the driest and fastest growing in the UK.

By 2025 we expect to serve 3.3million households, with over 200,000 new homes connecting to our sewer network; about 180,000 to our water network.

To enable this growth, we must invest in many projects across our region, to enhance capacity in our sewer network and to provide water pipes for new homes.

One of these projects is to install 2.4km of new water mains in Witham St Hughs and Swinderby.

This vital work will ensure that thousands of customers in your area can continue to use their taps and flush their toilets without a second thought.

Work started on 11 January and is on track to be complete by the end of June 2021.



Why is this work so important?

This scheme will enable us to supply water to residents of new developments planned adjacent to the A46, while maintaining water pressure to our existing customers in the area.

If we did not undertake this work, thousands of customers could suffer low water pressure and possible interruptions to supply in the future.



Things you need to know:

Our teams are making good progress and have so far installed 220m of new pipe by open cut and completed two connections into the existing network. Our work on Eagle Road was completed ahead of schedule and the road closure removed on 28 January.

Work is underway on Camp Road, where the team have already installed and reinstated 120m of new water pipes. We will work progressively towards the A46 in approximately 150m sections, reinstating the road as we progress. We hope to finish our work in Camp Road and to remove the traffic lights ahead of schedule and will keep you updated.

We are also working to install the new pipe in fields adjacent to Eagle Road; we have upcoming road closures on Moor Lane and Green Lane to enable us to safely cross the junction before continuing along Halfway House Lane safe.





To keep our employees and the public safe, the following Traffic Management will be in place:

Phase of work	Traffic Impact	Approximate Timetable
Eagle Road	Road Closure	Complete
Camp Road	Multi-way Traffic Lights	On-going until 14 April 2021
Field Work	None	On-going
Moor Lane	Road Closure	22 February - 05 March 2021
Green Lane	Road Closure	01 March - 07 March 2021
Halfway House Lane	Road Closure	01 March - 02 April 2021

Want to know more?

To view weekly updates and progress please scan the QR code provided on the map to visit our website anglianwater.co.uk/witham-st-hughs

Coronavirus:

Our teams are following the latest Government advice regarding social distancing. As key workers, we are continuing to work hard providing one of life's essential services - keeping taps flowing, toilets flushing, and drains draining.

If you're self-isolating, our teams will take the necessary precautions if we do need to visit you. Our priority is always to keep both you and our colleagues safe.

Key - Witham St Hughs, Swinderby

Eagle Road - Complete

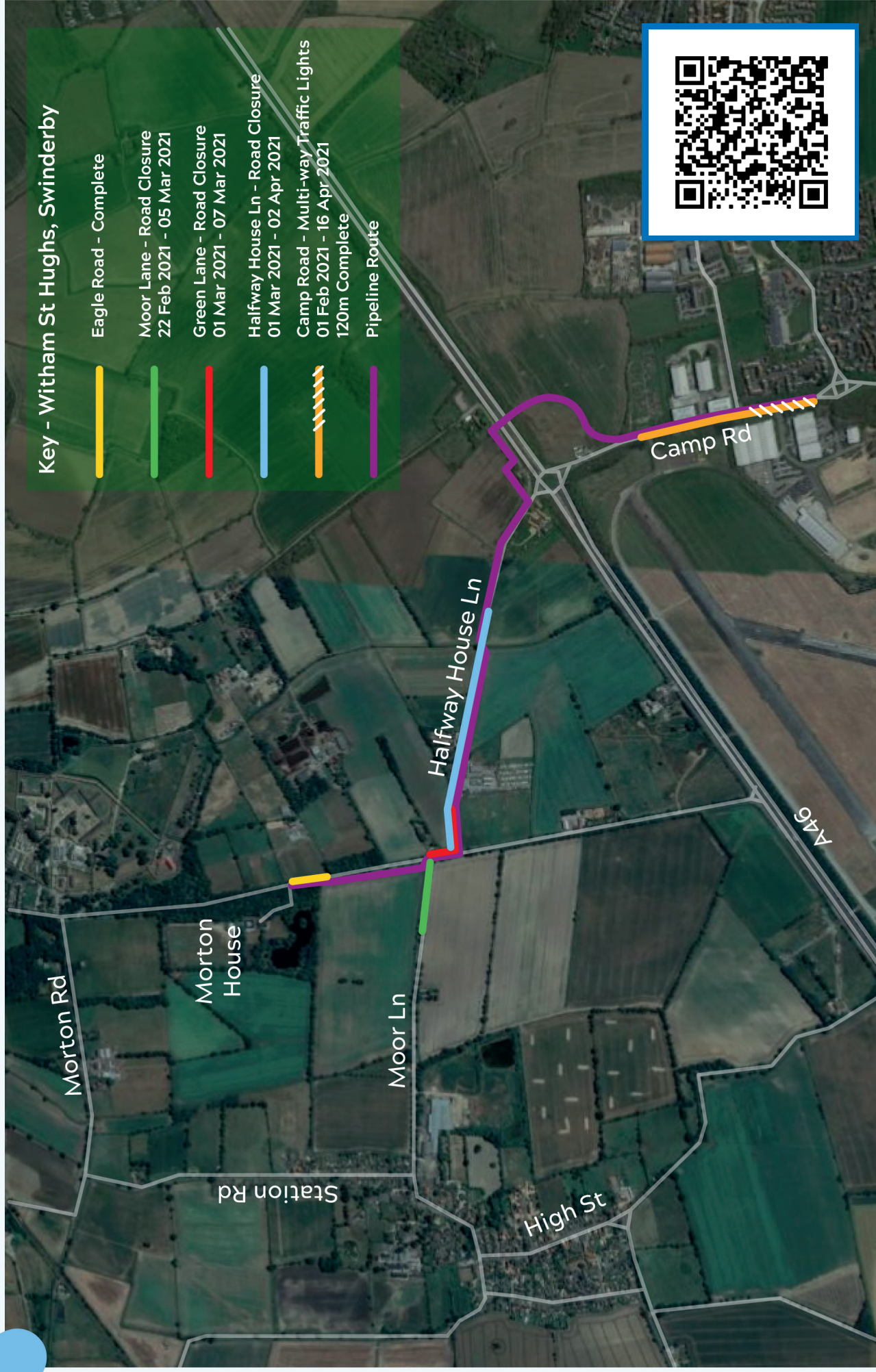
Moor Lane - Road Closure
22 Feb 2021 - 05 Mar 2021

Green Lane - Road Closure
01 Mar 2021 - 07 Mar 2021

Halfway House Ln - Road Closure
01 Mar 2021 - 02 Apr 2021

Camp Road - Multi-way Traffic Lights
01 Feb 2021 - 16 Apr 2021
120m Complete

Pipeline Route



To find out more visit our website www.anglianwater.co.uk/witham-st-hughs