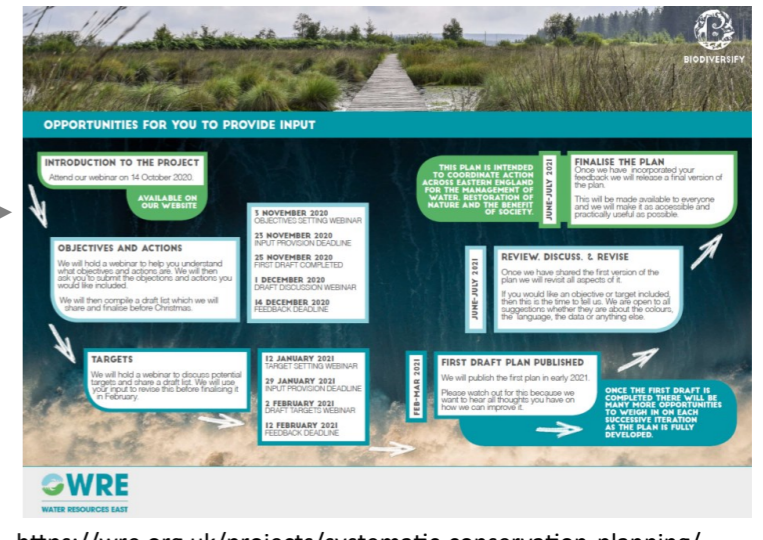
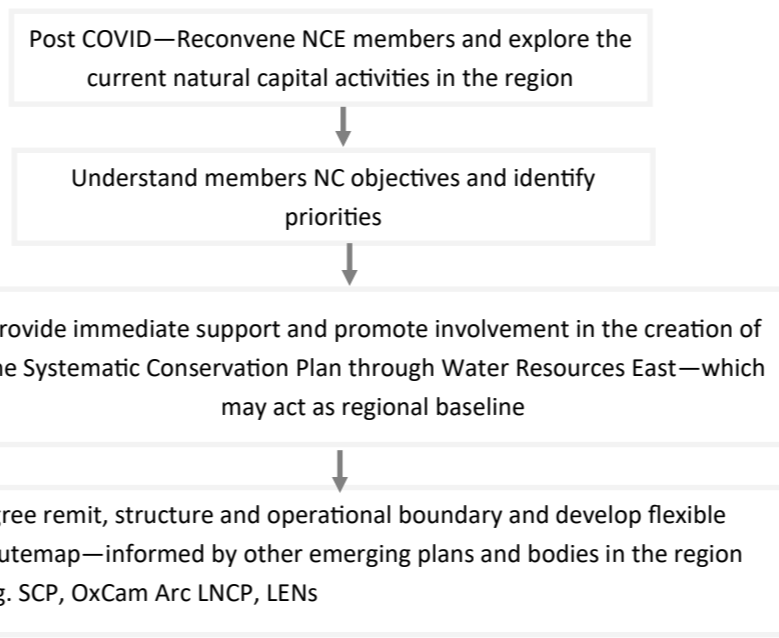


Natural Capital East's Strategy Milestone Route Map

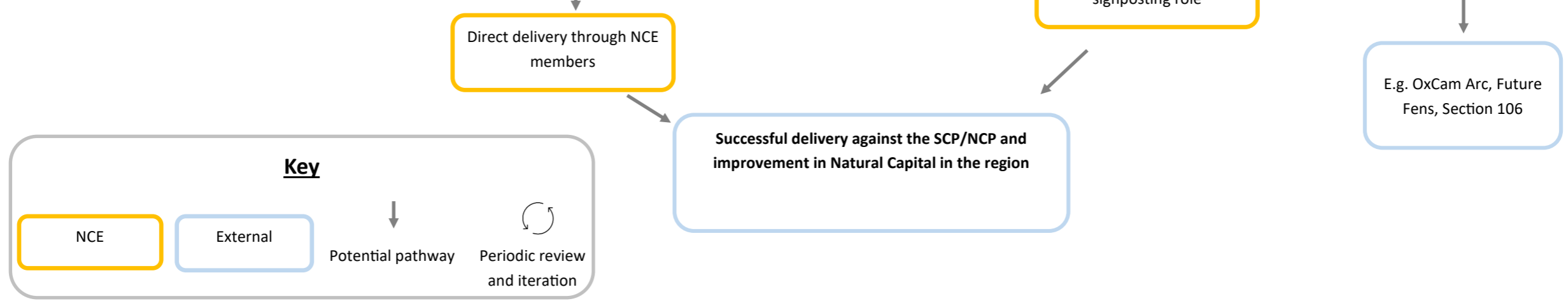
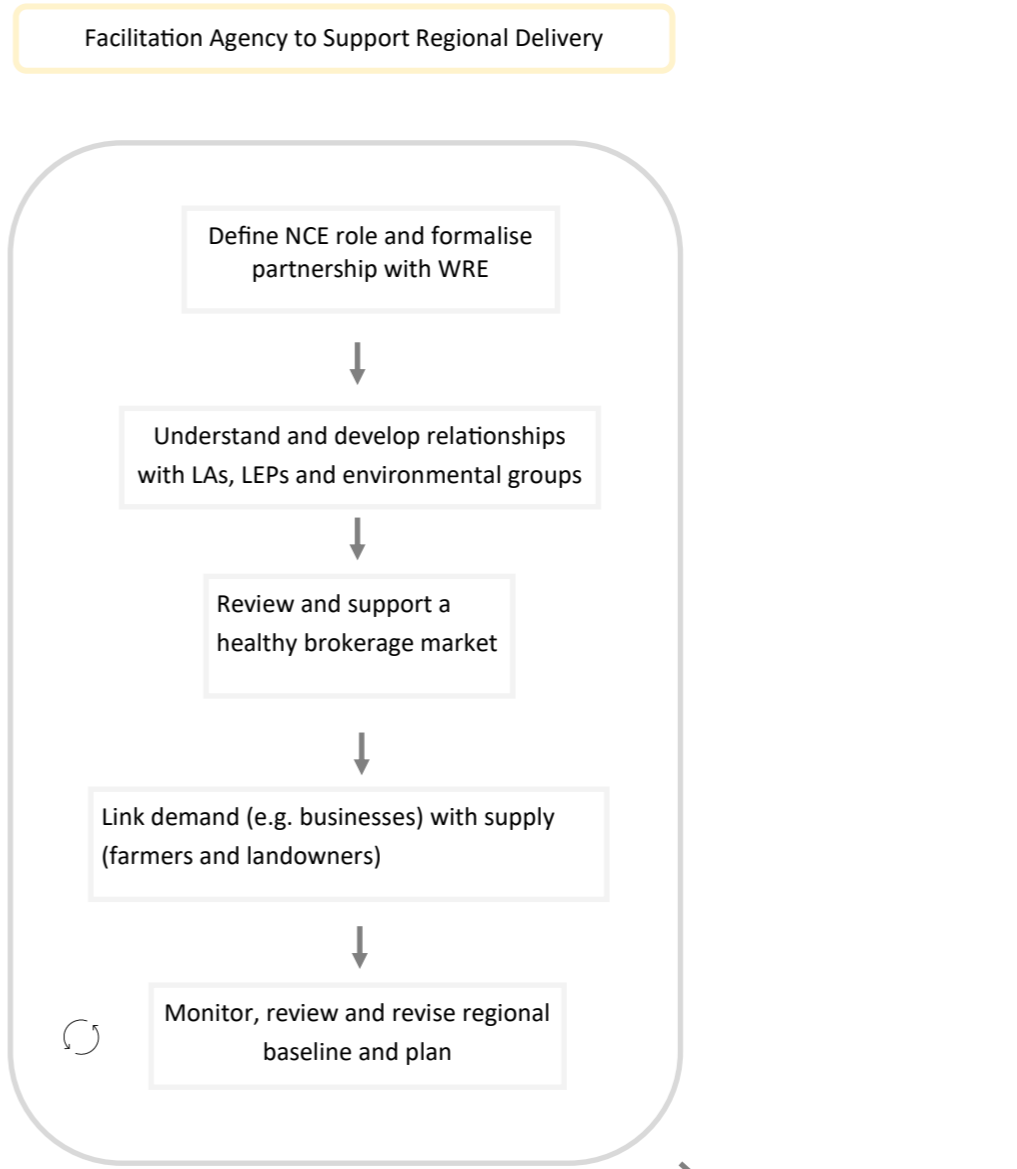
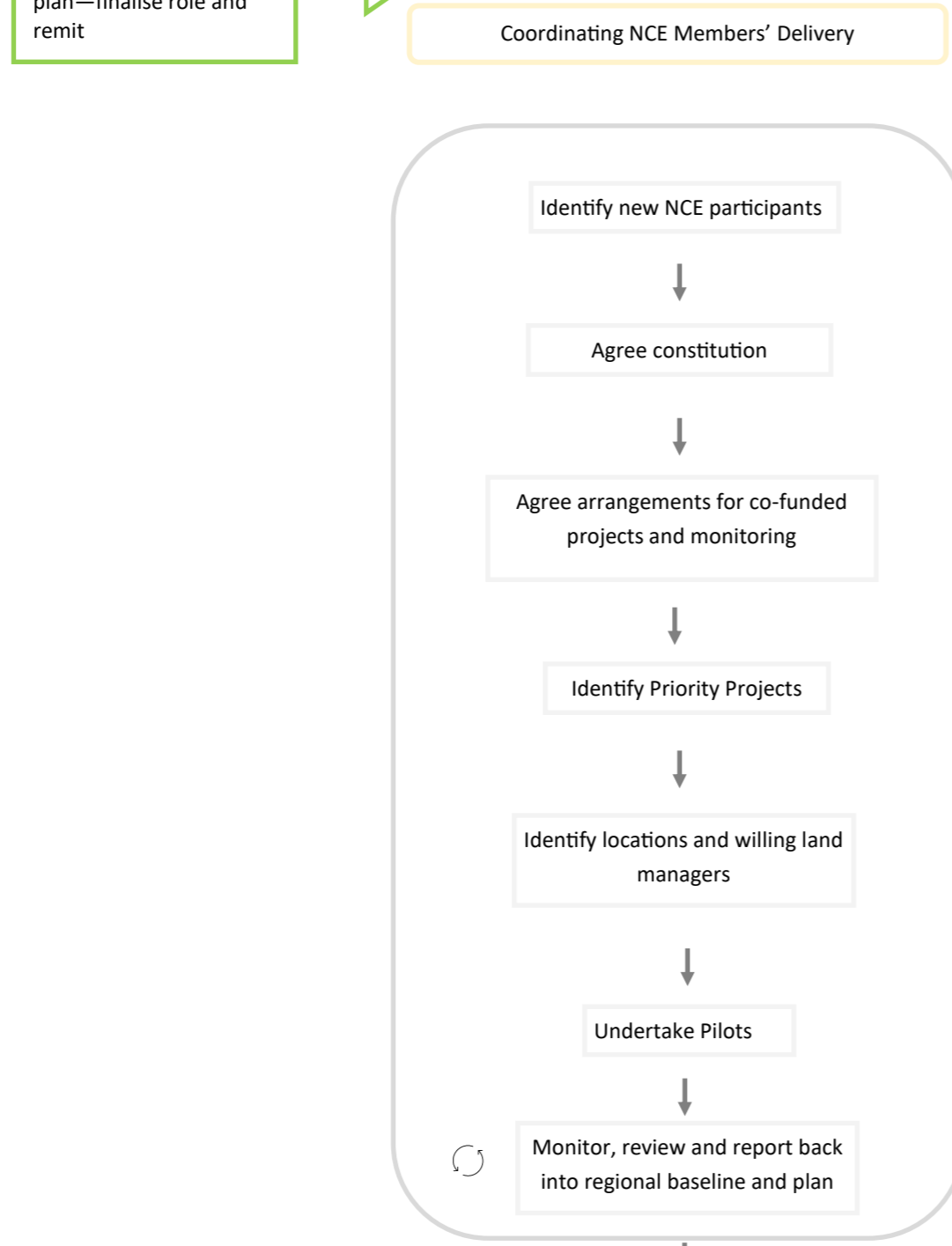
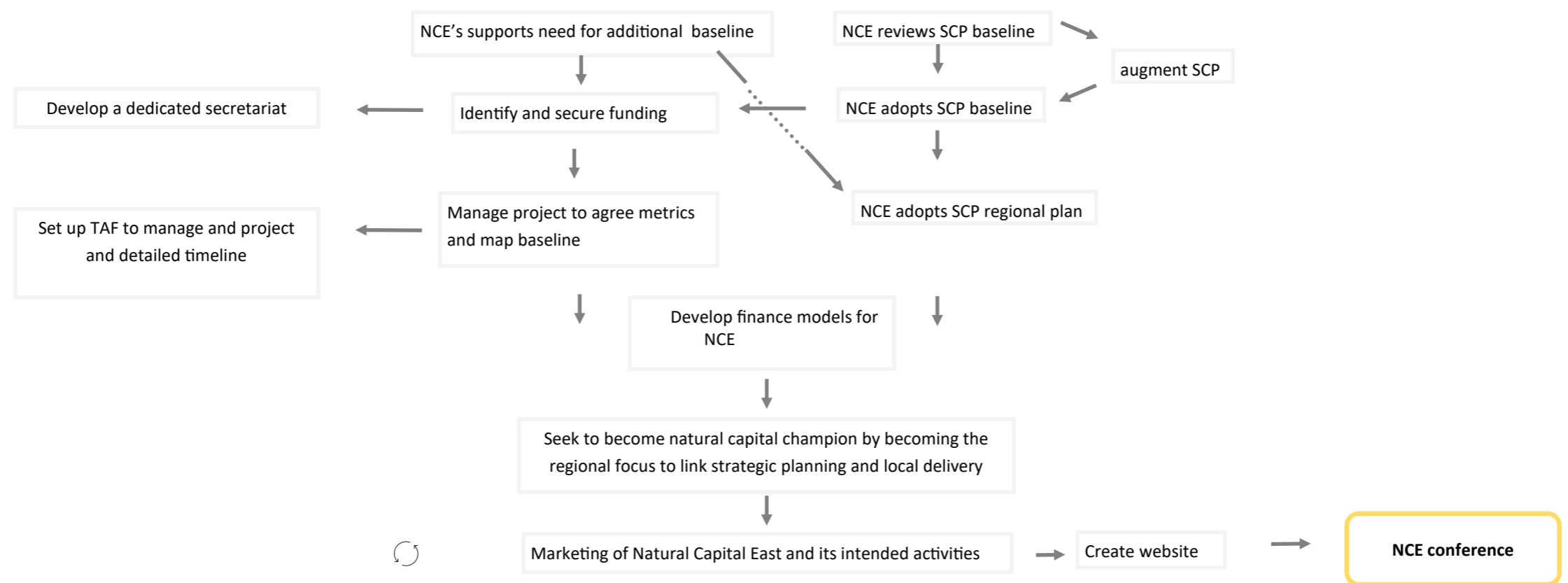


<https://wre.org.uk/projects/systematic-conservation-planning/>

Key Decision
Will also need to review: ToR

Key Decision
Will also need to review: ToR - produce detailed plan to April 22

Key Decision
Will also need to review: ToR and revise business plan—finalise role and remit



Timeline v 2 - baseline required

Timeline v 1—SCP baseline

2020
Monthly Meetings
October to December

2021
Jan
Workshop

May meeting

July Meeting

2022

2023

2024

2025

2020
Monthly Meetings
October to December

2021
Jan
Workshop

May meeting

July Meeting

2022

2023

2024

2025