

# A-WINEP Application Pack

January 2026



Version: 1

**This Application Pack is designed to support applicants seeking funding from the Anglian Water A-WINEP Catchment Regeneration Fund and to help you ensure that your project aligns with our A-WINEP Objectives.**

## **Contents**

### **3 Welcome to the Catchment Regeneration Grant application guidance**

---

### **4 The Catchment Regeneration Grant programme**

- 4 Introduction
  - 6 Funding scope
  - 6 Eligibility criteria
- 

### **8 Grant guidance**

- 8 Match funding
  - 8 What classes as an in-kind contribution?
  - 9 What evidence is required for in-kind contributions
  - 9 Pre-project or sunk costs eligibility criteria
- 

### **10 How to apply**

- 10 The application process
  - 11 How projects will be scored
- 

### **13 Reporting and monitoring**

- 13 Reporting requirements
  - 14 Monitoring requirements
- 

### **15 FAQs**

---

### **16 Further information and support**

# Welcome to the Catchment Regeneration Fund application guidance

**Anglian Water is a purpose-led company committed to bringing environmental and social prosperity to the region we serve. We recognise the need to go further in protecting and enhancing the environment and are dedicated to improving environmental quality for current and future generations. At the heart of this purpose is our belief that collaboration – combining expertise, effort, and investment – will accelerate progress.**

Our Advanced WINEP (A-WINEP) Programme is a key part of this approach. Between 2025 and 2030, we are one of only three water companies nationally selected to demonstrate an A-WINEP approach. Running alongside the traditional Water Industry National Environmental Programme (WINEP), which focuses on

improvements linked to our own assets, A-WINEP enables us to address pollution sources we could not tackle through conventional programmes.

Our Rural Regeneration Programme, including the Catchment Regeneration Fund, is central to A-WINEP. The Fund supports Nature-based Solutions (NbS) projects that improve water quality and water resources through co-funding with partners across 11 priority catchments in Norfolk, the Lark, and the Cam. This work will be underpinned by our A-WINEP Partnership Centre of Excellence, which will build the evidence base for the programme's benefits. Our A-WINEP Programme will also deliver reductions in combined sewer overflow (CSO) spills and sewer flooding through urban regeneration in Southend and Great Yarmouth.



**Jonathan Glerum**  
**Head of Environmental Outcomes**

This is a really exciting opportunity for our region to pilot the A-WINEP approach. Our previous work with Catchment Partnerships, delivered over many years, has shaped our thinking and enabled the creation of the Catchment Regeneration Fund

The Fund empowers partners to deliver projects that make a lasting difference, generating evidence for the value of collaborative, nature-based investment that will help shape water company policy for decades. We are proud to trial this approach across our target catchments and hope you will join us on this journey.

“ ”

# The Catchment Regeneration Grant programme

## Introduction

The Catchment Regeneration Fund is part of our Advanced WINEP Programme which aims to accelerate environmental improvement within our region. The Catchment Regeneration Fund focuses on co-funding projects to enable NbS delivery to target water quality and water resources.

Over the next five years our Rural Regeneration Programme will focus on 11 catchments: **North Norfolk, North West Norfolk Rivers, Wensum, Bure, Yare, Wissey, Little Ouse and Thet, Waveney, Lark, Cam Lower and Cam Rhee Granta**. We are looking for projects that will implement Nature-based Solutions within the 11 target A-WINEP Catchments which meet at least one of our primary objectives and obtain 1:1 match funding.

To view your project location, please visit the [East of England Nature-Based Solutions Hub](#) and select the Anglian Water Catchment Regeneration Fund.

This will enable you to:

- Check if your project would be located in one of the 11 target A-WINEP Catchments and is therefore eligible to apply for the Catchment Regeneration Fund.
- View the JBA Modelling layers of the 11 target A-WINEP catchments.



## Primary Objectives

### Primary Objective 1

Mitigating the impact of diffuse pollution, specifically nutrients and sediment.

This relates to projects that specifically target the impact of impact of nutrient diffuse pollution and sediment run off from a range of sources

### Primary Objective 2

Mitigating the impact of low flows.

This relates to projects that focus on aquifer or groundwater re-charge benefits to create a wetter river corridor, water storage within the catchment, or physically modify the river to provide habitat benefits for aquatic biodiversity.



## What is a Nature-based Solution?

Nature-based Solutions are defined as actions that protect, sustainably manage and restore natural or modified ecosystems to address societal challenges effectively and adaptively, simultaneously providing human well-being and biodiversity benefits (International Union for the Conservation of Nature, 2016).

Examples of NbS types we are looking to fund include, but not limited to:

1. Run off Attenuation Features (RAF's)
2. Soil and land use improvements
3. Riparian restoration
4. Floodplain re-connection
5. Land use change

More information on NbS types and their impacts can be found on the Water Resources East [webpage](#) on Best Practice Monitoring Guidance for Nature-based Solutions Monitoring and Figure 1 below.

NbS type	NbS examples	Primary Objective 1	Primary Objective 2	Secondary Benefit
		Mitigating diffuse pollution	Mitigating impact of low flows	Improving biodiversity
Land use change	Arable or pasture conversion to species-rich grassland, Arable or pasture conversion to native woodland, Arable or pasture conversion to peatland	Y	N	Y
Floodplain re-connection	Bank lowering, Channel re-meandering, Controlled flooding, Wetland restoration, Side channel/backwater creation	Y	Y	Y
Soil management	Tramline disturbance, sowing across the slopes, cover crops	Y	Some but not main driver – via increasing infiltration rates of the soil	N
Riparian restoration	Bank top revegetation, Instream revegetation, Bioengineering	Y	Possibly – depending on nature of project	Y
RAF's	Leaky dams, Retention ponds, Swales, Wetlands for water storage and replenishment	Y	Y	Y

Figure 1. Detail of each example NbS option and how it impacts water quality, water resources and biodiversity. Source: Adapted from [Best Practice Guidance on monitoring of Nature-based Solutions](#), Water Resources East.

## Funding scope

- Projects funded must meet at least one of the primary objectives of mitigating the impact of diffuse pollution from nutrients or mitigating the impacts of low flow (as defined above).
- All projects must obtain 1:1 funding to qualify for funding.
- Projects must include NbS measures that are designed to meet one or both of our Primary Objectives.
- The minimum grants awarded will be £20,000.
- There is no cap on maximum value of grants, however each application window may enforce a maximum allocation based on available budget.
- As part of the Catchment Regeneration Grant scheme, we will fund:
  - Capital delivery
  - Staff costs directly linked to project delivery.
- We will fund projects on land surrounding, or which impacts the following: Rivers and all watercourses, Bathing Waters, Lakes and Canals.
- We will not support projects that do not meet our eligibility criteria or any projects that may not result in delivery e.g. feasibility studies.

## Eligibility criteria

1. Projects must clearly **meet one of our Primary Objectives**: mitigate low flows or mitigate diffuse nutrient pollution.
2. All individual projects must provide at least 1:1 match funding meaning Anglian Water will only contribute up to 50% of the project total cost. This can be both from in-kind or cash contributions.
3. Projects must be located within one of our **11 target catchments**.
4. All applicants must of obtained, or will have to seek **match funding** (before payment of the grant). Applicants will have six months to confirm match funding from their application approval.
5. Projects must have achieved practical completion by 31/12/2029, **projects that will deliver earlier will be scored more highly** via our Project Selection Matrix.
6. Projects must **not already be in construction or already be fully funded at time of application**.
7. A key element of A-WINEP is understanding the benefits of partnership building to deliver increased benefit for the environment outside of the traditional WINEP programme. As such, all successful projects must monitor the impact of their intervention as part of project delivery and report their findings to Anglian Water. All relevant information, data and analysis must be provided to Anglian Water to support industry learning.
8. We welcome applications from charities, landowners, and public bodies. If you are submitting an application on behalf of a landowner, the landowner must provide written consent for their land to be included. This will be in the funding agreement.

**All applicants must adhere to the following terms and conditions:**

1. Projects must adhere to **the standard funding agreement** enclosed to claim funding.
2. All projects undertaken will be subject to the requirements of the Construction (Design and Management) Regulations (CDM), and must comply with all relevant duties and obligations as set out within the regulations.
3. a) Most of our funding is capital to fund project delivery costs. We are seeking projects that are predominantly capital funding and will seek a breakdown of costs to ensure this meets our capitalisation rules. If you would like to discuss specific project examples, please contact one of the team. Project design costs and staff costs directly attributed to a project are classed as capital.  
  
b) All capital projects located on third-party land must include confirmation, in accordance with the applicable legal terms, to ensure that Anglian Water retains the right of access for maintenance should the asset owner fail to fulfil their obligations.  
  
c) While our funding is focused on capital delivery, the budget is not exclusively capital, and there is some capacity to accommodate additional associated costs where these support the project outcomes.
4. Anglian Water will not provide additional funds to cover VAT; applicants are responsible for any VAT liabilities associated with their project.
5. Applicants must ensure they have suitable insurance in place and may be required to share this with Anglian Water.



# Grant guidance

## Match funding

Match funding is a financial arrangement where one party agrees to contribute funds to a project or initiative on the condition that another party provides an equivalent or proportional amount of funding.

**The funding expectation is 1:1, meaning for every £1 that is committed, £1 needs to be matched from an alternative source.**

- We will accept both **cash and in-kind match funding to make up the 50% partnership contribution**. Both cash and in-kind match funding will need to be evidenced.
- Match funding will be **considered from all sources, as long as they are not linked to any other Anglian Water funding**, and can **clearly evidence the source of the alternative funding**.
- Match funding can include sunk costs into the project development from up to a year prior to application to the Catchment Regeneration Fund, and to up to a year once A-WINEP Catchment Regeneration Funding has been approved.
- You may still apply for the Catchment Regeneration Fund without match funding as long as you are seeking additional funding. If

your application is successful, you will have six months to obtain 50% funding. Projects that apply with match funding already secured will score higher than those that do not.

- Projects which have a **greater proportion of cash match** will be scored more highly.

## What classes as ‘in-kind’ contributions?

In-kind contributions are non-cash resources provided to a project that have a verifiable monetary value – e.g.:

- Land
- Donated staff time
- Use of equipment or facilities
- Volunteer labour
- Free or discounted professional services
- Donated materials, space, or software licenses

### Any in-kind funding needs to be:

- Essential to delivering the project
- Reasonably valued (not inflated)
- Evidenced and verifiable through documentation

Category	Example	How to evidence/value
Land	Land is donated as part of the project	By an independent land agent at current market value
Staff time (paid by another organisation)	Partner university or charity contributes a staff member's time	Timesheets or letter from employer confirming time and equivalent salary cost
Volunteer time	Community volunteers delivering project activities	Volunteer sign-in sheets, logs of hours worked, and rate justified (often based on local median wage or agreed volunteer rate)
Donated materials/equipment	A company donates lab consumables or IT hardware	Invoice or market quote showing fair value; donation letter from supplier
Free or subsidised venue hire	Meeting space provided at no cost	Confirmation letter or email from venue stating value and rate
Professional services	Pro-bono legal, marketing, or design work	Letter from provider stating normal hourly rate x hours donated
Use of existing infrastructure	Shared use of an existing lab, vehicle, or IT system	Allocation record showing usage hours and pro-rata cost

Figure 2. Illustration of in-kind funding categories, examples and how to evidence the value of in-kind contributions for the Catchment Regeneration Fund.



## What evidence is required for in-kind contributions:

**To evidence in-kind contributions, we require clear documentation as detailed below:**

A signed letter or email from the organisation providing the in-kind contribution, stating:

- The type of contribution (e.g., staff time, space, materials)
- The monetary value
- The basis of valuation (hourly rate, market price, etc.)
- The period it covers (e.g., six months of project delivery)
- That the contribution is committed to the project

### Valuation method

The valuation should be:

- Realistic and auditable – you must be able to show how the figure was calculated
- Comparable to market rates – e.g., for volunteer time, use national living wage or a standard rate published by your funder or umbrella body (e.g., NCVO, UKRI)
- Supported by documentation (quotes, rate cards, pay scales).

### Ongoing evidence during delivery

During project delivery, funders often expect:

- Timesheets or activity logs for staff and volunteers
- Usage records for donated equipment or space
- Receipts or estimates for donated materials
- Audit trail that matches what was pledged in your application.

## Pre-project or sunk costs eligibility criteria

Pre-project or sunk costs may be eligible as in-kind contributions if they meet the following criteria:

- **Directly related to the project:** The costs must be directly associated with the development of the project, such as planning, feasibility studies, or initial consultations.
- **Proper documentation:** Detailed records must be maintained, including timesheets, volunteer logs, invoices, or confirmation letters, to substantiate the value of the contributions.
- **Valuation:** The contributions should be valued at fair market rates. For instance, volunteer hours can be valued based on standard hourly rates for similar work in the area.
- Applicants will not be paid any cash sum for their sunk costs.
- If the applicant has any doubt about whether pre-development costs should be eligible as in-kind funding, the applicant should seek prior approval for including pre-project costs as in-kind match funding to ensure eligibility from the A-WINEP Grant Team.



# How to apply

## The application process

The Catchment Regeneration Grant Scheme operates on a **four-month rolling cycle**:

- **Two months open** for applications
- **Two months closed** for review

The first window will open at the end of January 2026, taking applications in February and March. Scoring and review will follow in April and May 2026.

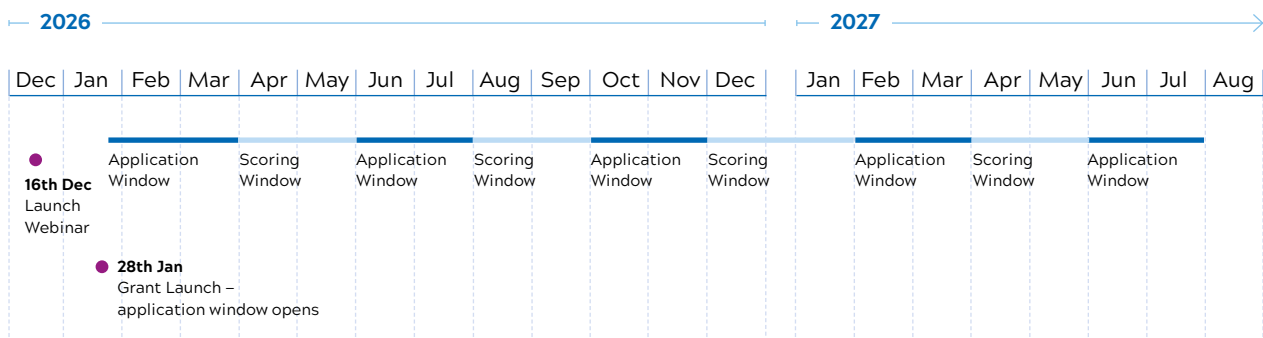


Figure 3. Infographic to show the timeline of the Catchment Regeneration Fund Application process, showing a two month opening window, followed by a two month closed window for review.

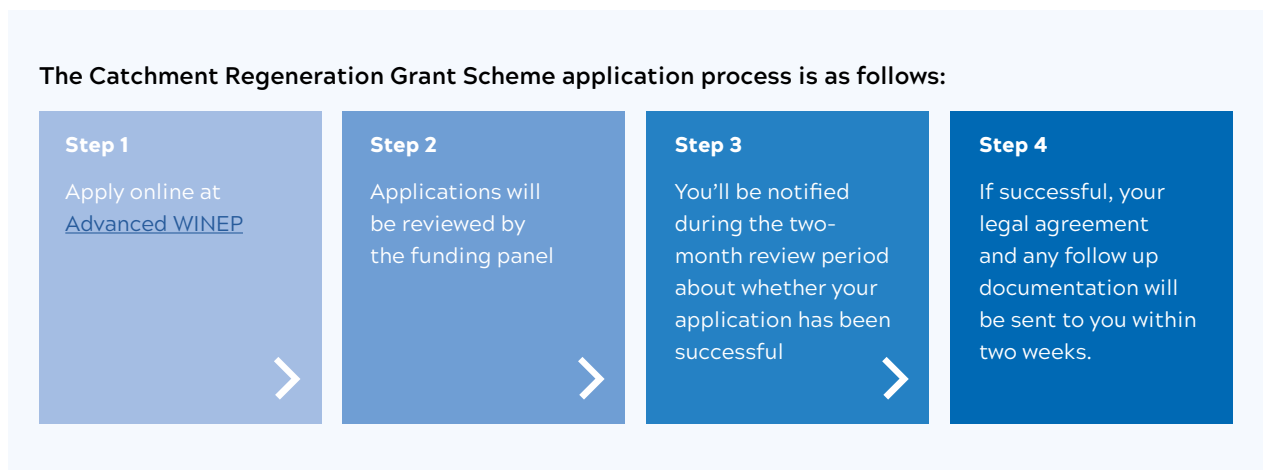


Figure 4. Infographic showing the Catchment Regeneration Fund application process in steps 1-4.

## How projects will be scored

All projects will be scored fairly and independently based on the following criteria. They will also be subject to a Catchment Regeneration Funding Panel who will provide expert judgement on projects and make recommendations for funding.

Please note the Project Scoring weightings for 'Potential to generate environmental outcomes' and 'Project readiness' are 25% each of the scoring criteria respectively.

**Project readiness** – To be able to demonstrate the benefits of co-delivery of NbS and inform regulator discussions in 2028/2029, projects will score more highly based on project readiness.

**Potential to generate environmental outcomes** – this metric is based on how well a project is deemed to meet one of two (or both) of the Primary Objectives of targeting diffuse pollution or mitigating the impacts of low flow.

**Potential to generate biodiversity and other co-benefits** – this metric is based on how well the

project contributes to biodiversity and other co-benefits such as education, social value and recreation.

**Match funding and financing opportunities** – We accept projects that provide both cash and in-kind contributions to make up the '50% Partnership Contribution' stipulation, however projects that provide a higher % of cash to make up their 50% partnership contribution will score more highly.

**Project location** – Alignment with Anglian Water's target areas for environmental impact based on JBA modelling. Projects must be located in one of the 11 A-WINEP Catchments to be considered eligible for the Catchment Regeneration Fund. Projects will score more highly if they are in one of the 16 priority sub-catchments identified by JBA Modelling in terms of where there is most impact of NbS on water quality and quantity issues. Projects will score the most highly if they are in one of the top four priority sub catchments for water resources and water quality (Figure 5 below).

Level of prioritisation			
	A-WINEP Catchment Regeneration Fund open to Applicants in 11 A-WINEP Priority Catchments.	Project scores more highly if they are in one of the Top 16 Priority Sub-catchments identified by JBA Modelling.	Project scores even more highly if they are in one of the Top 8 Priority Sub catchments for water quality and water resources.
<b>List of catchments</b>	North Norfolk, North West Norfolk Rivers, Wensum, Bure, Yare, Wissey, Little Ouse and Thet, Waveney, Lark, Cam Lower and Cam Rhee and Granta.	Broome Beck Longford br (r Waveney), Tributary of Waveney, Mendlesham Stream, The Beck, Starston Brook, River Blackwater, Tiffey, Tas (Head to Tasburgh), Tud, River Chet, Little Ouse, Tuddenham Stream, Kennett-Lee Brook, Tributary of Rhee, Watton Brook and Wissey.	Target storage Run-off Attenuation Features (RAFs) in catchments identified by WR modelling to have most impact – Tiffey, Tud, Waveney and Mendlesham.  Focus NbS projects to improve Water Quality specifically in the Tas, Browome Brook, Tud or Kennet Lee Brook.
<b>Rationale</b>	These are our target A-WINEP Catchments identified in the business plan.	This is where Tier 2 modelling was carried out. Top 16 sub-catchment prioritisation took account A-WINEP Catchment area, level of effort and feasibility of achieving Good RNAG status, Headwaters, chalk stream coverage and WINEP funding.	In these catchments more detailed modelling was carried out and has shown that targeting specific NbS interventions in these catchments would have the greatest positive impact on water resources and water quality.

Figure 5. Catchment map showing 11 target catchments for A-WINEP

[The East of England Nature-based Solutions Hub](#) can help inform your application by:

- [NbS Opportunity Mapping | CaBA East of England Hub](#). A set of opportunity maps which show where NbS for water resources could have greatest environmental benefit, with the potential for identifying co-benefits such as water quality improvements, natural flood management and biodiversity enhancements.
- [WRE NbS Opportunity Mapping](#). This shows NbS options that would be suitable for different land parcels. To do this, you can navigate to the page, [Regional Explorer East of England Hub](#), click on 'Opportunity' on the right hand side of the screen and check that a tick is in the box labelled 'WRE Opportunity Mapping'.

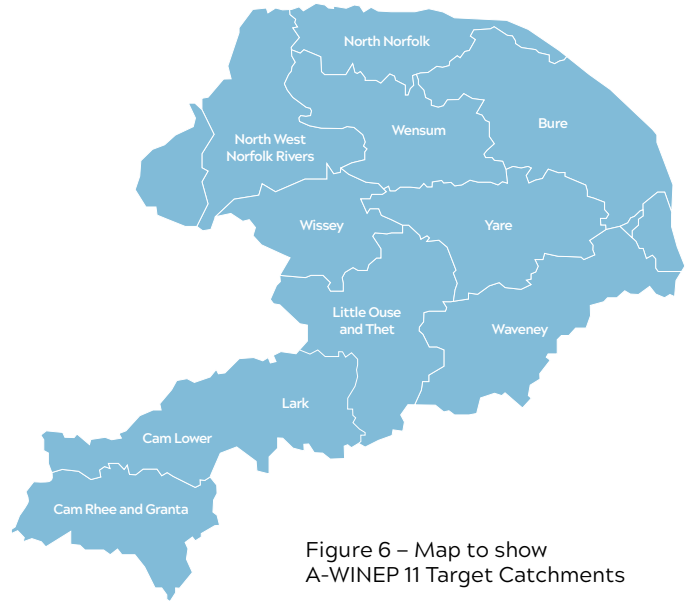


Figure 6 – Map to show A-WINEP 11 Target Catchments

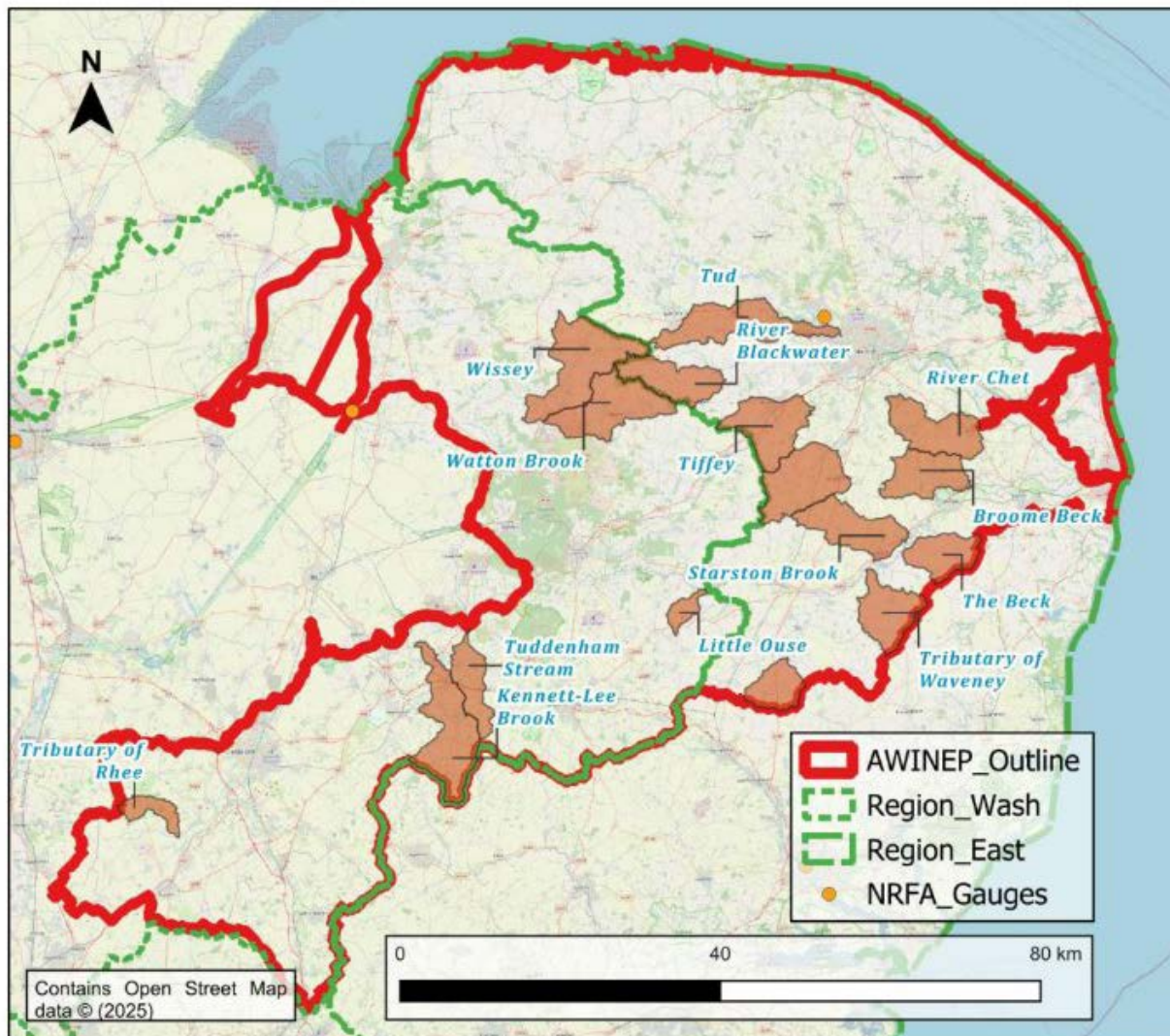


Figure 7 – Catchment map showing 16 target waterbodies for the A-WINEP Grant scheme where JBA Modelling showed NbS interventions would have the greatest impact for water quality and water resource benefits. Source: Diffuse Pollution Mitigation with Nature-based Solutions Report, JBA 2025.



# Reporting and monitoring

Catchment Regeneration Fund applicants are required to report and monitor their progress to ensure accountability, demonstrate the impact of their projects, share learnings with the sector, and comply with the conditions of the Catchment Regeneration Fund. This process helps Anglian Water track outcomes, maximise environmental benefits, and inform future funding and regulatory decisions.

## Reporting requirements

All projects will have a minimum reporting requirement and reporting template will be shared upon successful applications, detailed below. The contents of the reports will be reflective of the monitoring expectations.

	Project size (£ asked for from Anglian Water)		
	>£50,000	£50,000-£200,000	>£200,000
Interim report	Half way ✓	Quarterly ✓	Quarterly ✓
Project completion report	✓	✓	✓
Site visit opportunity	N/A	✓	✓

Figure 8. Table shows level of detail required for Reporting for different sizes (£) of projects.

### Reporting may include:

- Project progress updates
- Summary of the project to date including quantitative figures of impact such as area (ha) of new habitat created or km of river restored.
- Summary of the impact of the project on local biodiversity.
- Summary of the impact on the project on the social, amenity or educational aspects of the work.
- Any changes to the original project scope including new partners, match funding or changes to project design etc.
- Before, during and after intervention implemented to evidence work complete.
- Detail of intervention monitoring and data to date.
- Key risks to the project identified and mitigation put in place.
- Budget tracking.
- Evidence of match funding (particularly in-kind time sheets etc.).
- Update of East of England NbS Hub to show project progress.

## Monitoring requirements

A key part of our A-WINEP Programme is to collect evidence to demonstrate the benefits of the A-WINEP approach and of Nature-based Solutions to our Regulators (OFWAT and the EA) and be able to guide future regulatory policy and planning. This presents a really exciting opportunity for our region and the water sector as a whole to begin to deliver differently for the environment and enact positive change.

All projects are required to monitor the impact of their project on water quality and water resources.

The level of monitoring required for your project will depend on project size, with larger projects requiring more detailed levels of monitoring. Suggested monitoring for each of the NbS options are shown below, divided by project size.

	Project size (£ asked for from Anglian Water A-WINEP Fund)			
	Up to £50,000	£50,000-£100,000	£100,000- £200,000	£200,000 +
Type of NbS Monitoring	Basic water quality and flow impact monitoring	Standard water quality and flow impact monitoring	Standard water quality and flow impact monitoring	Standard Plus water quality monitoring and flow impact monitoring

Figure 9. Table shows Monitoring Requirements for different projects based on the amount of Grant asked for from Anglian Water (£).

More detail about Project Monitoring can be found in the [Monitoring and Evaluation Strategy document](#).



### Reporting on the East of England Nature-based Solutions Hub

As part of your application, you are encouraged to upload your project idea to the East of England NbS Hub.

If your project is successful, you must upload your project into the East of England NbS Planning Hub as a condition of receiving funding and keep your project entry updated on the Hub throughout the project lifespan.

Guidance for the East of England Nature-based Solutions Hub can be found here: [Guidance | CaBA East of England Hub](#) and a user guide for how to upload projects to the hub can be found here: [East of England Regional Hub user guide](#).

## FAQS

### **Can I submit the same application more than once?**

A project can only be submitted once unless we provide recommendations and advise for a revised application, in which case it can be resubmitted.

### **Is there a minimum or maximum amount of funding I can apply for (either total amount or in respect of the total value of the project)?**

There minimum level of funding is £20,000. There is no maximum limit, but this may be reviewed over time and be altered at the discretion of Anglian Water.

### **Can I still apply if I don't yet have match funding in place/confirmed?**

Yes, you can, however all projects will have six months from receiving confirmation of the successful application to obtain match funding, or evidence that match funding is committed.

### **Which water bodies are eligible? (i.e. rivers, estuaries, lakes, canals, wetlands etc.)**

We will consider anything within the water environment and the adjacent land, with the view of how NbS can enhance them to improve low flows from abstraction or diffuse nutrient pollution.

- All watercourses including main and non-main river and watercourses maintained by an IDB
- Bathing Waters: Yes including coastal and river bathing waters.
- Ponds and Lakes: Yes, if the condition of the lake can demonstrate clear impact on watercourses or groundwater.
- Canals – Yes

### **What can the Catchment Regeneration Fund?**

To be considered for the Catchment Regeneration Fund, all Applications will have to contribute directly to the delivery of a project that meets one or both of our Primary Objectives, with clear deliverables. Specific examples of what the Catchment Regeneration Grant will fund is below:

- Staff – This would be considered if it is included as part of project costs to achieve delivery, rather than applying to the Catchment Regeneration Grant scheme solely for hiring a member of staff.
- Feasibility Studies – No
- Land acquisition – No

### **What is the upper limit for a single organisation to apply for across A-WINEP?**

We do not envisage a cap per project or organisation. All projects will be based on merit, and we reserve the right to come back to an individual Catchment Regeneration Grant Project Application with a reduced Grant offer, based on the judgment of the Catchment Regeneration Grant Scheme Funding Panel. This may change as the application process goes on.

### **What qualifies as matched funding? Is there a cap on % that is 'in-kind', or other external sources that are not permitted?**

There is not a cap on the % of match funding that can be made up by in-kind e.g. non cash contribution. However please note that projects with a higher proportion of cash match will be scored more highly. Please also see the '[Grant Guidance](#)' page for more detailed information on match funding.

### **What is considered 'bad' – is there a particular RNAG, level of diffuse pollution or volume for low flow that would support assessing eligibility?**

As long as there is data and evidence to show the watercourse needs improving such as from the [Environment Agency Catchment Data Explorer](#), then that would be sufficient evidence to apply for the Catchment Regeneration Fund.

As long as there is a known pressure then there is no minimum condition is needs to be in, however the scoring criteria will score certain areas and interventions more highly based on modelled assessments of where Nature Based Solution interventions would have the most impact for water quality and water resources.

**Will chalk streams and applications in headwaters score higher or be considered a priority area?**

Yes, chalk streams will be prioritised. Ultimately, we want to create natural and urban catchments that enable environmental and social prosperity for our customers, aligned with the strategic ambitions of nature recovery strategies and national environmental objectives. This includes achieving Good Ecological status and creating thriving ecosystems in our most valuable habitats (e.g. chalk streams).

**Will A-WINEP funded projects be able to receive match-funding from other Anglian Water Grants? e.g.; any of the Anglian Water Catchment Management Grant Funds?**

No

**Do Anglian Water offer any other grants to farmers and landowners?**

If your project is not eligible for A-WINEP funding, you might like to review the grants our Catchment to Coast Team offer to farmers and landowners, covering innovation, outdoor pig green cover management, training and events. Details can be found here: [Supporting farmers to care for rivers](#).

Please note, though, that other Anglian Water grants cannot contribute towards the match-funding required for an A-WINEP grant.

**What happens if my project doesn't achieve the proposed outcomes?**

We anticipate that projects meet our Primary Objectives and achieve successful funding will meet the proposed outcomes come delivery. We appreciate that long term changes in water quality, biodiversity and resources could take longer than the project duration to evidence, however we do hope to use the monitoring data collected to show short term environmental improvements.

**Am I guaranteed funding if I meet the project criteria?**

Every application will be reviewed and scored by our review panel. Where the applications for funding outweigh the funds available, those applications scoring highest will be offered funding.

**When can I apply for funding?**

The A-WINEP Catchment Regeneration Fund will operate on a 2-months-open, 2-months-closed rolling window, to give applicants multiple opportunities to apply for funding.

**How will I know if my application has been successful?**

At the end of the 2-month application window, we will contact all applicants with one of the following: an offer of funding, a decline of funding, project change suggestions.

**How does the A-WINEP Catchment Regeneration Fund link to the Norfolk Water Strategy Programme?**

Anglian Water and Water Resources East have been working closely together on our A-WINEP Catchment Regeneration Fund. The Norfolk Water Strategy Programme (NWSP) provides grants of up to £15,000 to support early-stage studies across Norfolk that lays the groundwork for impactful, well-informed Nature-based Solution (NbS) projects. Projects that have had the feasibility element of their work funded via the NWSP are welcome to apply to the Catchment Regeneration Fund.

More information on the NWSP and Grants available can be found here: [Apply for NWSP Funding – Water Resources East](#).



## Further information and support

For further information please see our [website](#).

If you have any questions, please contact the A-WINEP Grant team at [awinepgrantfund@anglianwater.co.uk](mailto:awinepgrantfund@anglianwater.co.uk)

**Click the below links to find out more**

[Application Form \(available from 28th Jan\)](#)

[Legal Agreement \(available from 28th Jan\)](#)

[Evaluation and Monitoring Strategy](#)

[Lark Flagship Glossy](#)

[Regional Hub](#)

[WRE Norfolk Water Strategy Programme](#)

[Apply for NWSP Funding – Water Resources East](#)

[Catchment Explorer England](#)



**Anglian Water Services Limited**

Lancaster House  
Lancaster Way  
Ermine Business Park  
Huntingdon  
Cambridgeshire  
PE29 6XU  
[anglianwater.co.uk](http://anglianwater.co.uk)